

**ann
craft
trust**
acting against abuse

Annual Report

Safeguarding Adults

2024-2025





Contents

A Message from the CEO.....3

Meet The Team.....5

Executive Summary.....6

Financial Overview.....8

Safeguarding Adults Week 2024.....10

Training, Consultancy & Research.....11

Safeguarding Adults in Sport.....13

caPLUS
COMMUNITY ACCOUNTING

To see our annual statement of accounts see separate report prepared by our accountancy partners Community Accounting Plus. Known as CA Plus, they exist to enable good management in public benefit organisations (mainly charities and CIC's).



Message from the CEO



Welcome to the Annual Report for the Ann Craft Trust for the period of August 2024 to July 2025. Having successfully navigated two full years in post, I sit here proud of what the charity has achieved.

The past twelve months have been a year of growth, reflection, and renewed ambition for the Ann Craft Trust. As we look back, we are proud of the progress made in strengthening safeguarding practice across sectors, deepening partnerships, and investing in the foundations that will sustain our work for years to come.

However, I want to begin this introduction by acknowledging the sad, untimely death of our colleague Nicola Dean in February 2025. Nicola was a much-loved, knowledgeable member of the team and continues to be missed by all who knew her.

You'll notice that our annual report looks a little different this year – we are required to submit certain information to the Charity Commission and Companies House and this information can be found at the back of this executive report. The executive report provides you with some of our highlights, 'at a glance' – we hope you enjoy this new shorter version of our report but please do read the full report too, which contains information about all of our work and financial information.

It also means a much shorter introduction from me as I want you to get into the amazing successes we've achieved across the charity during the last year.

I do want to give some thanks though. Thank you to the staff, trustees and associates across the Ann Craft Trust, without whom, we would not be in the position we are in where we can support organisations to develop their safeguarding adults arrangements. I'd also like to thank the University of Nottingham for their continued support of the Ann Craft Trust, providing us with a home at a world class university.

As we move into the next year, our focus is clear: to deepen our impact, strengthen partnerships, and innovate in safeguarding practice. My final thanks are to you all, our partners, supporters, and allies.

Together, we are making safeguarding adults a national priority.

Happy reading
Stuart Sale – CEO

Our patrons, trustees & associates in 24/25

Trustees &

Management Committee

Stuart Sale (CEO)
Dave Marsland (Chair)
David Charnock
Natasha Eason
Rachel Fyson
Tania May
Paul Johnson
Dr Elisabeth Alton
Mark Brookes MBE
Sarah Mander
Deborah Peat

Patrons

Sir Roger Singleton
Kate Spicer
Richard Whitehead MBE

Consultants

Abra Millar

Research

Rachel Clawson
Rachel Fyson
Dr Alison Garnder

Staff

Lisa Curtis
Elliot Davies
Nicola Dean
Jodi Evans
Emma Gibson
Dave Lochtie
Sarah Nolan
Joanne Pell
Hazel Rippin
Nat Rock
Catherine Sykes
Roisin Tear
Laura Thorpe
Kimberley Walsh

Associates

Robert Kenniwell
Sarah Knight
Ros Smith
Clare Staley
Ieuan Watkins
Antony Pearce

Meet our current team



Lisa Curtis

Deputy CEO & Head of Safeguarding Adults



Elliot Davies

Marketing & Communications Manager



Jodi Evans

Safeguarding Adults in Sport Manager in Wales



Emma Gibson

Head of Safeguarding Adults in Sport



David Lochtie

Operations Manager



Sam Morrison

Finance Officer



Sarah Nolan

Safeguarding Adults in Sport Administrator



Joanne Pell

Safeguarding Adults in Sport Manager



Hazel Rippin

Head of Marketing & Communications



Nat Rock

Safeguarding Adults Administrator



Stuart Sale

CEO



Hannah Shaw

Safeguarding Adults in Sport Manager



Catherine Sykes

Safeguarding Adults Manager for Sport & Activity



Laura Thorpe

Safeguarding Adults Manager



Kimberley Walsh

Safeguarding Adults in Sport Manager

Executive summary

Governance and people

Our Board has evolved significantly. We were delighted to welcome Dr Mark Brookes, Sarah Mander, and Deborah Peat as trustees during the year.

At the same time, we said farewell to our former chair David Marsland, and David Charnock, both of whom gave invaluable service to the Trust. Their leadership helped shape our strategic direction and embed strong governance practices.

In January 2025, we welcomed Sam Morrison as Finance Officer, bringing stability and expertise to our financial operations. We thank Natalie Palmer, who supported us in this role on a temporary basis, for her contribution during a period of transition.

Roisin Tear also left us in May and we thank her for her contributions to safeguarding adults during her time with us.

This year also saw the completion of an externally facilitated governance review, which included five online workshops and one-to-one interviews with staff.

The review has already delivered tangible improvements: refreshed trustee recruitment and onboarding, revised Memorandum and Articles, new register of interests and gifts, a clear delegations framework, and enhanced collaboration between trustees and staff.

Risk oversight has been strengthened through a lead trustee and subcommittee, and governance themes are now embedded into Board agendas.



We have delivered on key strategic actions across four key areas:

Governance and policy development:

We were proud to launch our wellbeing and right-to-disconnect policies, which set out a supportive framework for staff and associates to disconnect when they need to and focus on their wellbeing – this has led to reduced sickness absence for stress related illness.

We've also implemented consistent quality assurance processes, introduced an internal governance policy and consolidated governance arrangements with the University of Nottingham for clarity and compliance.

Communication and collaboration:

We've established a structured communication approach (including team meetings), created methods for capturing and sharing successes, and enhanced collaboration between trustees and staff on strategy and purpose.

Operational and service improvements:

We've developed standardised project planning templates and proposal processes, reviewed pricing structures for competitiveness, scoped and moved towards a CRM system, and completed external audits to inform future website development.

Innovation and growth:

We've advanced safeguarding frameworks and assurance models, explored monetisation opportunities for the framework, evaluated partner relationships for strategic value, and scoped new learning opportunities and accreditation options.

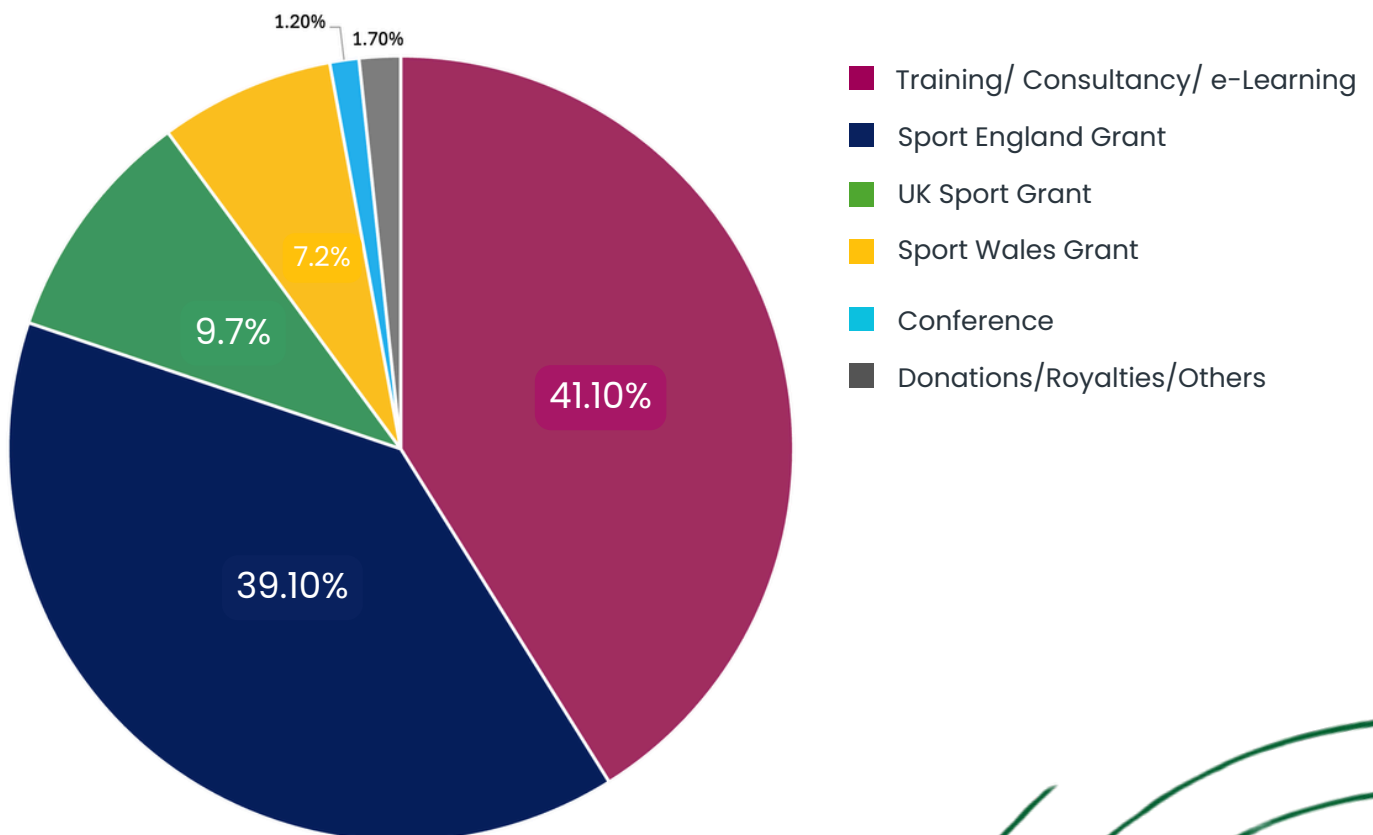
Financial overview

The charity remains financially stable, with robust oversight and healthy cash reserves. Year-end results show a reportable deficit of £43.4k, better than the budgeted deficit of £51k.

Total income comparison: 24/ 25 vs 23/24



Income by activity- 12 months to 31 July 2025



Income split

We have a mixture of restricted and unrestricted funds. Restricted funds are our grant funding from Sport England, Sport Wales and UK Sport. This money can only be spent on things related to these grants. Unrestricted funds can be spent on anything to achieve our charitable purpose.

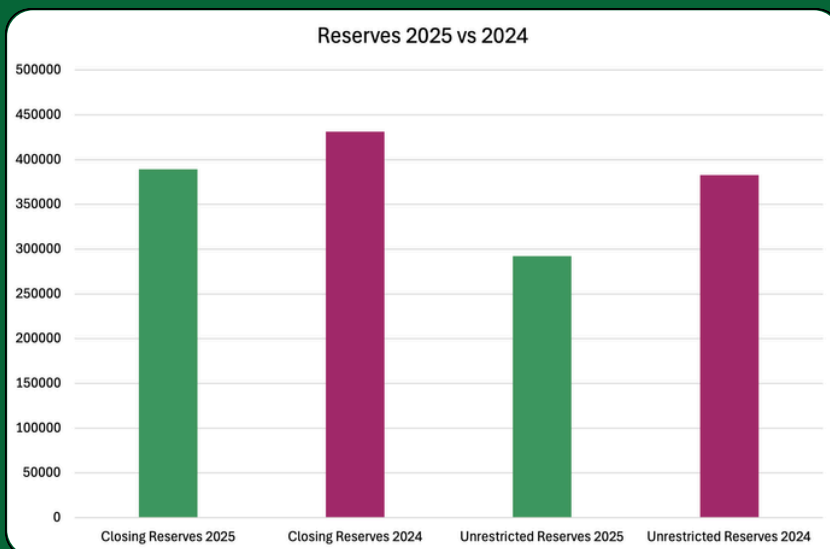
This year has seen a decrease in unrestricted income of 13.5% and an increase of 8.2% restricted income.



Reserves

Reserves are the funds that we set aside to ensure the charity can continue to operate should we encounter financial difficulties.

We can spend unrestricted funds on any of our charitable purposes; however, our reserves policy states we must maintain a minimum reserve of 3 months' running costs. Restricted reserves can only be spent on activities related to our grant funding. Our current unrestricted reserves stand at £91,713 above our minimum level, ensuring resilience as we plan for future investment.



Campaigns



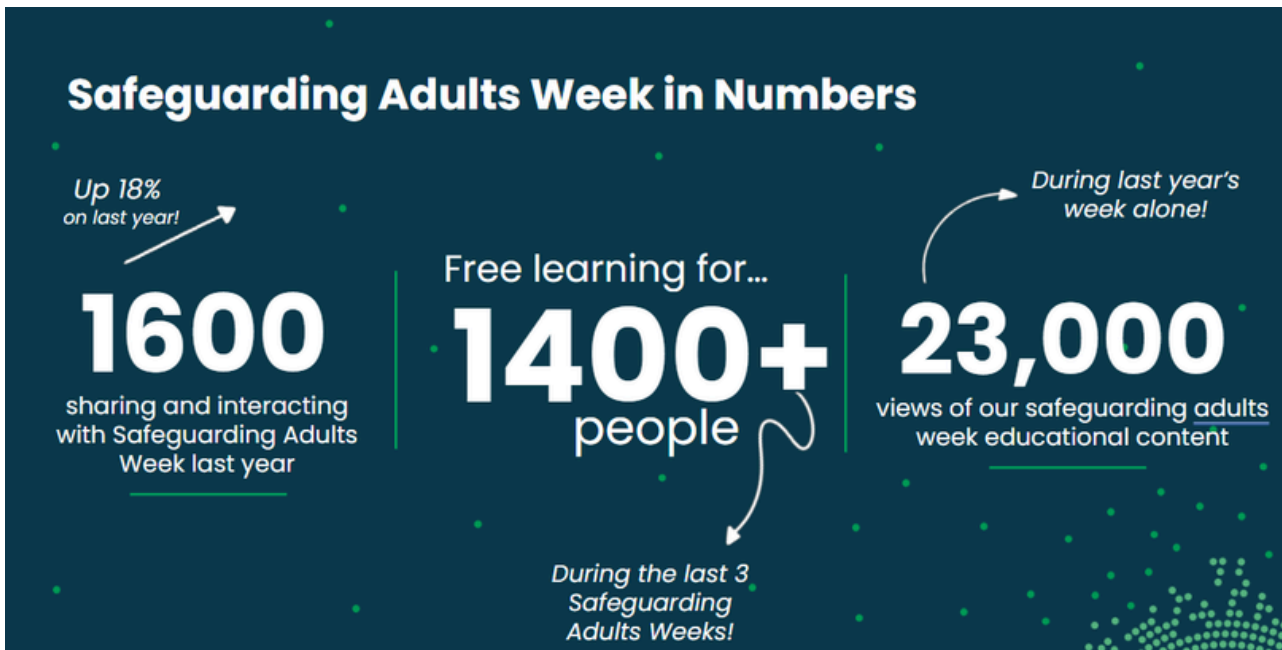
Safeguarding Adults Week 2024

Our campaign provides a time for organisations to come together to raise awareness of important safeguarding issues. The core theme for the 2024 week was Working in Partnership.

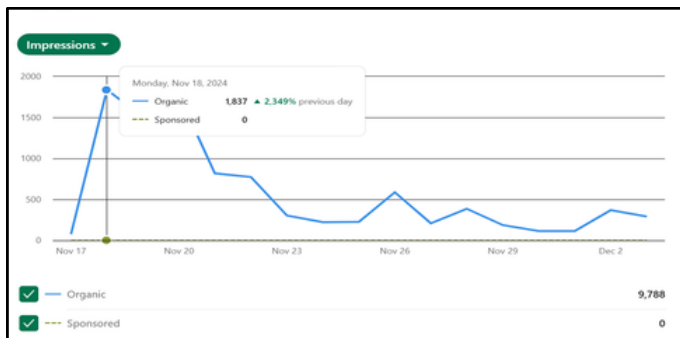
Effective partnerships allow us to share our knowledge of safeguarding, learn from others and ultimately create safer cultures.

Our flagship event continues to grow in reach and impact each year. Some key stats include: 16,200 social interactions (+18%), 23,211 website views (+12%), 1,000 resource downloads, and 712 event bookings.

Source: Brand Mentions, Google Analytics.



Highlights launch and activity online for March - Nov 2024



Example of offline activity

Training, consultancy & research

Training and consultancy remain core to our mission.

Over twelve months we processed 10,889 bookings from 247 organisations, migrated to Nucleus CRM, and delivered audits and safeguarding support for multiple partners. Research partnerships have flourished, with successful funding bids and contributions to new Care Standards for the Human Trafficking Foundation.

Across training this has included:

- A growing number of repeat customers who have booked their training for the whole year ahead and 'as required'.
- New 'open training' courses which complement our core safeguarding training offer.
- A specific focus on higher education continues, which has seen us launch a Level three training offer, specifically aimed at the sector.
- Our e-learning offering continued to develop including releasing new courses "An Introduction to the Mental Capacity Act", and "Financial Capability". We developed partnerships with organisations such as BAFTA, Corpus Christi College of the University of Cambridge and the England and Wales Cricket Board whereby large numbers of individuals accessed our e-learning courses to develop their safeguarding knowledge.



The graphic features a photograph of an older woman with short grey hair and glasses, wearing a yellow sweater, sitting at a desk with a laptop. To the right of the photo is a green box containing text and icons. The text includes the course title, a list of bullet points, a URL, and a QR code. A brain icon with a heart inside is connected to a checklist icon by a dotted line.

ann craft trust

Learn Essential Safeguarding Skills Online

Introduction to the Mental Capacity Act

- Understand the law that protects decision-making rights
- Master the two-stage capacity test
- Explore safeguards, best interests and supporting capacity

tinyurl.com/learnmca



Consultancy & research

Our consultancy offer has included:

- Continued support to the Opendoor charity with the assessment of drama schools and plans to build on this success and learning.
- Completion of a number of safeguarding audits across a variety of organisations, including some audit work in Scotland.
- Continued Independent Safeguarding Consultancy to a number of organisations on an ongoing basis.
- Supporting the development of resources for 'a new wellbeing in construction initiative.



And our research support has included:

- Being written in to a successful bid for funding regarding financial abuse in partnership with OXIL Research which is the non-profit research arm of Oxford Information Labs.
- Continued work with the Rights Lab Nottingham with the develop of e-learning to support research into the exploitation of people with a cognitive impairment.
- Developing new Care Standards for The Human Trafficking Foundation, along with other professionals.
- Acting as subject expert for the development of a new International Standard (ISO) for safeguarding.



Our partners:



Safeguarding in sport

Our work in sport has seen significant progress with Sport England, Sport Wales, and UK Sport, including successful funding secured for April 2025–September 2026, expanded Framework engagement, and athlete safeguarding training across high-performance programs.

With the Safeguarding Framework across England, we approached our offer in a proactive way across the year:

In the first half of the year we focused on increasing dialogue with organisations yet to submit, mainly through Active Partnership (AP) and National Governing Body (NGB) networks. We supported portal development, moving to a new platform in December 2024, and saw positive engagement during Safeguarding Adults Week.

Engagement with National Disability Sports Organisations improved, with one completing the Framework, along with three strong submissions from other National System Partners.

In the last six months the sport team proactively reached out to additional key partners. We confirmed timelines for Framework completion with existing partners and maintained strong support for lead officer forums and the Safeguarding Welfare Officers network.

Requests for board training remained steady, and more lead officers attended training beyond AP and NGB representatives.

The impact was increased submissions from Active Partnerships in particular, as well as increased engagement from national organisations.



Our partners:



“

Completing the Safeguarding Framework has been invaluable. It has provided us with the opportunity to understand our current provisions for safeguarding adults in Welsh Aquatics while also identifying room for improvement. Thank you Jodi for your encouragement throughout our submission!

Zita Cameron, Head of Governance at Swim Wales

”

In Wales, three organisations submitted their Framework for assessment and we worked closely with others preparing to submit in 2025.

The Ann Craft Trust Advanced Safeguarding Adults course now covers both English and Welsh legislation in one course which means we can support more sports organisations across England and Wales without increased workloads. This also helps safeguarding leads understand cross-border differences, encourages collaboration, and supports informed discussions.

We also co-delivered 19 Board training sessions to 19 Welsh partners with our partners from the Child Protection in Sport (CPSU) colleagues.

During the first half of the year UK Sport Funding was successfully applied for and awarded. This will cover the period from April 2025 until 30 September 2026. Following this, Ann Craft Trust (ACT) continued delivering support and assurance activities across UK Sport-funded organisations with some key updates below.

Through our funding from UK Sport we have continued to support elite sports providing training to both organisations and elite athletes, policy reviews and bespoke advice to a number of organisations. This is aiding progress of these organisations' progress towards meeting the Framework objectives.



Our partners:



Thank you to our supporters

We would like to thank the organisations that have worked with us and supported us throughout the year. Particular thanks go our funders UK Sport, Sport England, Sport Wales and the University of Nottingham.



If you would like to discuss training requirements or if you're a practitioner looking for safeguarding advice, please get in touch.

ann craft trust
acting against abuse

0115 951 5400

ann-craft-trust@nottingham.ac.uk

anncrafttrust.org

Follow us on social media



Ann Craft Trust, Centre for Social Work, University Park,
University of Nottingham, NG7 2RD

Company registration number: 4080805

Charity registration number: 1086592

The Ann Craft Trust

(A company limited by guarantee)

Annual Report and Financial Statements

for the Year Ended 31 July 2025

Community Accounting Plus
Units 1 & 2 North West
41 Talbot Street
Nottingham
NG1 5GL

The Ann Craft Trust

Contents

Reference and Administrative Details	1
Trustees' Report	2 to 15
Independent Examiner's Report	16
Statement of Financial Activities	17 to 18
Balance Sheet	19
Statement of Cash Flows	20
Notes to the Financial Statements	21 to 29

The Ann Craft Trust

Reference and Administrative Details

Chief Executive Officer	Stuart Sale
Trustees	Tania May Natasha Eason Paul Johnson Elisabeth Alton Sarah Mander Deborah Peat Mark Brookes
Charity Registration Number	1086592
Company Registration Number	4080805
Registered Office	Centre for Social Work University of Nottingham University Park Nottingham NG7 2RD
Independent Examiner	Eva Stevens, employee of Community Accounting Plus Units 1 & 2 North West 41 Talbot Street Nottingham NG1 5GL

The Ann Craft Trust

Trustees' Report

The trustees, who are directors for the purposes of company law, present the annual report together with the financial statements of the charitable company for the year ended 31 July 2025.

Trustees and officers

The trustees and officers serving during the year and since the year end were as follows:

Trustees:	Tania May
	Natasha Eason
	Paul Johnson
	Elisabeth Alton
	Sarah Mander (appointed 1 May 2025)
	Deborah Peat (appointed 9 July 2025)
	Mark Brookes (appointed 9 July 2025)
	David Marsland (resigned 30 April 2025)
	David Charnock (resigned 18 November 2024)
	Suzanne Wilson (resigned 30 September 2024)

Chief Executive Officer: Stuart Sale

Structure, governance and management

Nature of governing document

The charity is a company limited by guarantee and registered charity. It is operated under the rules of its memorandum and articles of association dated 25/09/2000 and most recently amended 04/12/2019. It has no share capital and the liability of each member in the event of winding-up is limited to £5.

The Ann Craft Trust

Trustees' Report

Recruitment and appointment of trustees

The Ann Craft Trust follows a transparent and structured process for recruiting and appointing trustees to ensure strong governance and alignment with our mission.

Recruitment Process

- When vacancies arise, we advertise widely through our website and networks. For example, see our current call for a Chair of Trustees:

<https://www.anncrafttrust.org/could-you-be-the-next-ann-craft-trust-chair-of-trustees/>.

- Interested candidates can review the details

<https://www.anncrafttrust.org/wp-content/uploads/2025/10/Chair-of-Trustees-Recruitment-Pack-October-2025.pdf> and submit an application via: <https://www.surveymonkey.com/r/ACTChairTrustee2025>.

- Applications are assessed against the skills and experience outlined in the recruitment pack.

Selection and Appointment

- Shortlisted candidates are invited to interview with existing trustees.
- Following interviews, trustees make recommendations for appointment.
- Future trustees are appointed in accordance with the

<https://www.anncrafttrust.org/wp-content/uploads/2025/10/Ann-Craft-Trust-Articles-of-Association.pdf>, which set out:

- o Term of Office: Three years, with the option for re-election for a second term. In exceptional circumstances, a third term may be agreed by special resolution.

- o Eligibility: Trustees must be over 18 and not disqualified under Article 35.

- o Appointment: Trustees may be appointed by ordinary resolution at a general meeting or by the board to fill a vacancy, provided the maximum number of trustees is not exceeded.

- o Nomination: Candidates can be recommended by trustees or proposed by members within the required notice period.

This process ensures that all appointments are fair, transparent, and compliant with our governing documents.

The Ann Craft Trust

Trustees' Report

Objectives and activities

Objects and aims

- a) To facilitate the safeguarding of all adults at risk and disabled children and young people who are vulnerable to abuse. To work towards the prevention of all abuse.
- b) To offer information and support to individuals and professionals, organisations and agencies working/caring in this field, and to advance the education and training of all organisations, charities, individuals and/or groups of individuals concerned with the protection of adults at risk and disabled children and young people.
- c) To raise the general level of public awareness of issues relating to the abuse of all adults at risk and disabled children and young people.
- d) To relieve all adults at risk and disabled children and young people who have been abused and are in conditions of need, hardship or distress.
- e) To relieve and support the parents / carers of such persons as appropriate who are in conditions of need, hardship or distress.
- f) To conduct any other activity whatever which can, in the opinion of the Management Committee, be advantageously conducted in connection with or ancillary to any of the business of the Charity and for such other supplementary matters as may be necessary or expedient for carrying out the principal objectives set out above, provided that such supplementary matters are charitable.
- g) To procure and print, publish, issue and circulate gratuitously or otherwise reports or periodicals, books, pamphlets, leaflets, films, videotapes, advertisements and appeals.
- h) To improve and elevate the technical and general knowledge of the organisations and individuals engaged in, or about to engage in, the care of adults at risk and disabled children and young people, or in any employment in connection therewith and to this end, either alone or in conjunction with universities, schools or other educational establishments or other bodies whatsoever, provide lectures, exhibitions, seminars, classes and conferences as may be required or applicable from time to time.
- i) To promote a better understanding of the needs of all adults at risk and disabled children and young people who have been abused and to promote public awareness, advocate and counsel on areas of common concern on this issue.
- j) To provide for the affiliation of such of the organisations and individuals who so wish to join the Charity and to promote the achievement of the objects of the Charity.
- k) To stimulate, undertake and encourage experimental work on the training of all adults at risk and disabled children and young people and others in relation to their special needs and requirements and in particular relating to such needs and requirements after the occurrence of abuse.

The Ann Craft Trust

Trustees' Report

l) To bring into association and intercourse locally, nationally and internationally any bodies and persons engaged in or about to engage in the furtherance of the objects of the Charity.

m) To promote the formation of any charitable bodies or organisations and to assist or enter into arrangements with such bodies or organisations in the furtherance of the purpose of the Charity, and in particular to render assistance either directly or indirectly to Government Departments or Public Authorities in the administration of statute and orders relating to adults at risk and disabled children and young people in such manner as such assistance may from time to time be requested by such Government Departments and Public Authorities or as the Charity may deem advisable.

n) To provide, assist or promote the establishment of support, through various means such as the provision and maintenance of charitable clinics, schools, homes, hostels, places for observation or boarding occupations, workshops, training centres, employment centres, clubs, libraries and other places in connection with the furtherance of the objects of the Charity and to provide services at or in connection with such places either gratuitously or otherwise.

o) To do all such acts and things which shall be calculated to promote the wellbeing of adults at risk and disabled children and young people and their families / carers and in particular for their rehabilitation after the occurrence of abuse.

Objectives, strategies and activities

We help others better understand safeguarding, primarily by providing training and consultancy, while supporting them to embed best practices across their organisations.

Public benefit

Our activities benefit the public through better safeguarding of adults and prevention of abuse.

The trustees confirm that they have complied with the requirements of section 17 of the Charities Act 2011 to have due regard to the public benefit guidance published by the Charity Commission for England and Wales.

The Ann Craft Trust

Trustees' Report

Achievements and performance

Completed Strategic Actions Overview

•Governance and Policy Development:

Implemented consistent quality assurance processes, launched wellbeing and right-to-disconnect policies, and introduced an internal governance policy. Consolidated governance arrangements with the University of Nottingham for clarity and compliance.

•Communication and Collaboration:

Established a structured communication approach (including team meetings), created methods for capturing and sharing successes, and enhanced collaboration between trustees and staff on strategy and purpose.

•Operational and Service Improvements:

Developed standardised project planning templates and proposal processes, reviewed pricing structures for competitiveness, scoped and moved towards a CRM system, and completed external audits to inform future website development.

•Innovation and Growth:

Advanced safeguarding frameworks and assurance models, explored monetisation opportunities for the framework, evaluated partner relationships for strategic value, and scoped new learning opportunities and accreditation options.

Our actions are explored in further detail below:

Safeguarding Adults Week 2024

Safeguarding Week is our largest event which occurs annually. This year we had:

- 16,200 interactions on social (up 18% on last year)
- 23,211 views of Safeguarding Adults Week content on our website (up 12% on last year)
- 1,000 downloads of resources - including posters, social media assets etc.
- 712 people booked onto events throughout the week.
- 264 podcast downloads (across November)
- 7 emails sent (regarding conference and SAW)
- 1,529 email opens
- 789 email clicks

Source: Brand Mentions, Google Analytics

LinkedIn

Highlights

Data for 11/17/2024 - 12/3/2024

9,788

Impressions
▲227.8%

333

Reactions
▲311.1%

14

Comments
▲180%

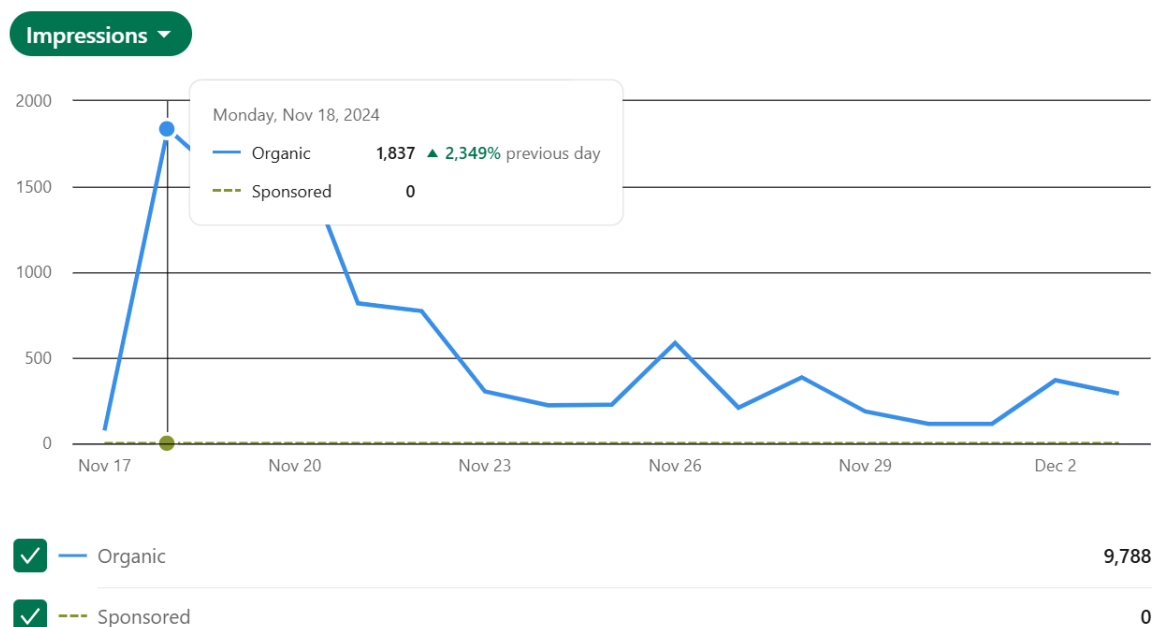
21

Reposts
●0%

The Ann Craft Trust

Trustees' Report

Metrics



Governance Review

The organisation conducted a governance review whereby an external facilitator designed 5 online workshops covering the seven principles. This enabled trustees to attend workshops and explore the principles through group discussion. The facilitator prepared questions to stimulate debate and tease out relevant issues for the Trust from the current version of the code. The workshops were supported by one-to-one interviews with members of staff to obtain their perspective. It found that the Board are at the beginning of a governance journey but there is now a detailed set of actions with several Completed Actions already:

- Trustee Recruitment and Onboarding

Recruitment paperwork reviewed and onboarding programme with support materials devised.
Current applicants successfully recruited.
Strategy agreed and implemented for recruiting a new permanent Chair and Vice Chair.

- Governance and Compliance

Memorandum of Articles revised and supplementary governance materials developed.
Register of interests and gifts/hospitality created.
Delegations framework established to clarify Board and management responsibilities.

The Ann Craft Trust

Trustees' Report

Training

- Continues to be busy, repeat customers Blind Veterans, Certitude, and Migrant Help are booking training to cover the whole of next year
- Other return customers Smart Works, Progress Group, Headway, HDA, Trinity College return booking as needed.
- New commissions include training for Experts by Experience a contract held by Choice Support in partnership with CQC, Severn Trent Water and Home Instead.
- Higher education continues to be a focus, following the launch of the Safeguarding in Higher Education Network and a new Level 3 Training specific to HE.
- Continue to support Opendoor with the assessment of drama schools and plan to build on this success and learning.

Sport -

Sport England

Across the year, we have seen steady and then significant progress in engaging organisations with the Safeguarding Framework:

First half of the year: Focused on increasing dialogue with organisations yet to submit, mainly through Active Partnership (AP) and National Governing Body (NGB) networks. We supported portal development, moving to a new platform in December 2024, and saw positive engagement during Safeguarding Adults Week. Engagement with National Disability Sports Organisations improved, with one completing the Framework, and three strong submissions from other National System Partners.

Second half of the year: The sport team proactively reached out to additional key partners. We confirmed timelines for Framework completion with existing partners and maintained strong support for lead officer forums and the SVO network. Requests for board training remained steady, and more lead officers attended training beyond AP and NGB representatives.

- Impact

Increased submissions from APs, supported by the SWO network.
Growing engagement from national organisations down to local level.
Continued development of the Framework portal to improve user experience.

Sport Wales

Safeguarding Adults Framework in Wales

Three Welsh NGBs have submitted to date:

Welsh Aquatics - strong submission
Welsh Athletics - strong submission
Golf Wales - result pending

The Ann Craft Trust

Trustees' Report

- Training in Wales

We are working closely with WRU, Table Tennis Wales, and FAW to prepare for full Framework submissions. The Ann Craft Trust Advanced Safeguarding Adults course now covers both English and Welsh legislation in one course (previously separate).

This helps safeguarding leads understand cross-border differences, encourages collaboration, and supports informed discussions.

CPSU and ACT delivered Board training to 19 Welsh partners in the last year, with more booked.

- Wales Safeguarding Lead Forum

October 2024: CPD on Female Health and Performance and a session on PREVENT.

June 2024: CPD from Pride Sports on LGBTQ+ inclusion and a session from Dr Rebecca Oatley on Dementia in Sport.

- Wales Collaboration and Outreach

Met with all 5 Gwent Safeguarding groups, delivering presentations on Safeguarding in Sport across Wales.

Offered Essentials training for club welfare officers and safeguarding officers free of charge.

Promoting collaboration and sharing best practice through scenario-based learning and group work.

UK Sport -

During the first half of the year UK Sport Funding was successfully applied for and awarded. This will cover the period from April 2025 until 30 September 2026. Following this, Ann Craft Trust (ACT) continued delivering support and assurance activities across UK Sport-funded organisations with some key updates below.

- UK Sport Framework Engagement:

We recently focused on initial outreach and engagement with sole-funded organisations new to the Framework, such as Aquatics GB, British Bobsleigh & Skeleton, British Curling, and Ice Hockey UK. Introductory meetings were scheduled and initial guidance shared.

We then developed deeper engagement, including policy reviews and bespoke advice for British Bobsleigh & Skeleton and British Para Table Tennis. Catch-up meetings were held with GB Boxing, British Handball, and British Volleyball to progress Framework objectives.

Joint-funded organisations continued to maintain compliance, with England Hockey and British Weightlifting completing Framework submissions during this period.

- UK Sport Training Delivery:

Athlete training delivered for British Para Table Tennis (April) and Paddle UK Sprint Programme (June), followed by Slalom Programme (August).

British Wheelchair Basketball athlete training delivered in September (two sessions for men's and women's teams).

Open Advanced and Essential safeguarding courses ran throughout both quarters.

Planning underway for Paddle UK coach training (October), Archery GB, Basketball UK, and GB Boxing sessions later in the year.

- UK Sport Key Achievements

Successful delivery of multiple athlete training sessions across high-performance programmes.

Increased engagement from sole-funded organisations, with several moving towards Essential Criteria compliance.

The Ann Craft Trust

Trustees' Report

Completion of Framework submissions by England Hockey and British Weightlifting.
Strengthened collaboration with sector partners to influence safeguarding standards.

Consultancy:

- Completion of 25-day audit United Response
- Completion of 4-day audit Bright Futures
- Completion of 10 day audit at Chest Heart, Stroke Scotland
- Completion of a number of other audits
- Independent Safeguarding Consultant Achieve Together
- Independent safeguarding Consultant MacIntyre
- Independent Safeguarding Consultant Camphill Village Trust
- Supporting the development of resources for 'MindFlow' mental health and wellbeing in construction

Research

- We have been written in to a bid for funding regarding financial abuse , this is in partnership with OXIL Research which is the non-profit research arm of Oxford Information Labs, this has been successful, and we are waiting on the next steps.

- The work with the Rights Lab Nottingham continues as a positive relationship and we are developing e-learning to support the research.

- We have been involved in developing new Care Standards for The Human Trafficking Foundation, along with other professionals, this is now the final stages of checking and will be launched in the next few weeks, date to be confirmed

- Board Development and Collaboration

Trustees undertook self-assessment to identify skills gaps, leading to enhanced recruitment processes.
Ongoing trustee learning opportunities introduced, including staff updates and CPD at Board meetings.

- Risk and Oversight

Governance themes embedded into Board agendas for regular review.

Lead trustee/subcommittee appointed for risk oversight, with initial risk matrix drafted and shared.

Training and Consultancy:

In 2024 we put 10,889 transactions through our bookings system, including bookings from 247 different organisations and more than 1500 e-learning transactions. There were 129 different types of bookings across the four core activities (e-learning, open training, bespoke training and consultancy). Since November 2023 we have 361 booking accounts and circa 7,000 unique delegates after removing duplicates (from the 15,000 total bookings). We have since moved to a new booking System - Nucleus, which allows for greater flexibility and bespoke e-learning and also works as a CRM which will help us develop new partnerships to support income.

The Ann Craft Trust

Trustees' Report

Financial review

The charity remains financially stable, with appropriate oversight in place, and highlighted areas requiring ongoing attention for the Board's awareness.

This year we have spent a total of £41,935 more than we have received in income:

Income for restricted funds has been more than expenditure, increasing the restricted funds balances.

Income from unrestricted funds has been less than expenditure, which has decreased our reserves by £90,572.

Consultancy income is £94k under budget, and overall unrestricted income is £162.9k under budget at the end of the year. Whilst expenditure has exceeded income due to a shortfall in budget income figures, we have also kept expenses under budget, which are overall £152.8k under budget, with unrestricted expenditure being £72.2k under budget.

Cash remains healthy, with unrestricted reserves at year end of £292,320. Our reserves policy is to have a minimum of £199,150 in reserves.

Policy on reserves

1. Purpose of the Reserves Policy

The purpose of this policy is to ensure that Ann Craft Trust (ACT) maintains adequate financial reserves to support the continuity of its activities in the event of unforeseen financial challenges or to take advantage of strategic opportunities. This policy outlines the approach to managing reserves, ensuring the charity's sustainability and resilience in delivering its mission.

2. Reserve Level Determination

The ACT Trustees are committed to ensuring that reserves are maintained at a level that is sufficient but not excessive. The appropriate level of reserves will be reviewed annually by the Trustees and is currently set to cover:

- Three to six months of core operational costs, which include salaries, and other essential overheads. This ensures that ACT can continue to function effectively during any short-term financial difficulties or where cashflow is hindered through late payments, for example, delayed grant funding.
- Contingencies for unexpected costs, such as legal obligations
- Redundancy pay, in the event the charity ceases to operate. The reserves must cover redundancy payments in line with the University of Nottingham's redundancy policy, ensuring staff are compensated as per contractual and legal obligations in the case of closure of ACT.
- Strategic opportunities, which may require short-term or one-off funding, such as new project initiatives, partnerships, or developments aligned with the Trust's mission.

The target level of reserves will be calculated and agreed on an annual basis, determined by the current assets and overheads.

The Ann Craft Trust

Trustees' Report

3. Management of Reserves

The ACT reserves will be held in an account which offers the most favourable interest rates and this will be reviewed regularly by the CEO and Operations Manager. The account used to hold reserves should allow for easy access where cashflow issues arise.

4. Monitoring and Review

- The reserve levels will be monitored monthly by the CEO and leadership team and on a quarterly basis by the Board of Trustees during the finance agenda item of the trustee meeting
- It will be reviewed annually as part of financial and future planning.
- Any significant use of reserves, outside of those related to cashflow, where there is assurance that this will be remedied within 2 months, should be justified by the Senior Leadership Team and approved by the Trustees. In such cases, a plan will be devised to restore reserve levels to the agreed target in a timely manner.

5. Reporting of Reserves

ACT will ensure transparency in its reserves policy by clearly reporting on its reserve levels in the annual financial statements. This will include:

- The amount of reserves held.
- The reasons for holding the stated reserves.
- The intended use of any designated reserves.
- Any future plans for building up or reducing reserves.

6. Review of Policy

This Reserves Policy will be reviewed annually by the Trustees to ensure it remains appropriate and responsive to changes in the financial environment and the needs of ACT.

This policy ensures that ACT operates with prudent financial management, maintains flexibility to respond to future opportunities or challenges, and provides for redundancy obligations in the event of business closure.

Principal risks and uncertainties

Grant funding from Sport funders may not be renewed in 2027, meaning that are at risk of redeployment or redundancy

Financial uncertainty at University of Nottingham may lead to increased rent/service support charges, eviction or decision to cut ties with charity

Competitors in the safeguarding audit /training/ online offer leading to a reduction in income.

Reduced income due to changes in taxation, National Insurance contributions affecting customer ability to commission.

Increased expenditure due to increased taxation, national insurance contributions or other costs outside our control.

Plans for future periods

Overall details are contained within the [ACT-Strategy-document_digital_final.pdf](#)

Overview of actions for 25/26

Goal – promote good safeguarding governance (by ensuring that our own internal governance arrangements are sound and we are leading by example)

The Ann Craft Trust

Trustees' Report

Actions within this section include:

- Developing a separate action plan for year two of the governance review, with trustees
- Review and implement updated Articles of Association
- Support the development of a trustee skills matrix, with trustees
- Develop a board paper structure, setting out the purpose of papers
- Implement risk and finance committee
- Develop a staff wellbeing questionnaire/survey to ensure that our wellbeing offer remains fit for purpose
- Develop a trustee dashboard to provide relevant and consistent information about the charity

Goal – develop more partnerships within new and existing sectors across the UK

Actions within this section include:

- Develop relationships with ‘Children First’ who provide safeguarding support to sports organisations across Scotland
- Continue developing our relationship with the construction industry
- Continue to develop our relationship with the Higher Education sector
- Develop links with the entertainment/broadcasting sector to raise awareness of safeguarding adults and the work of ACT

Goal – provide accessible, up to date resources and training

Actions within this section include:

- Implement findings from the research undertaken in 24/25 to develop our website to both appearance and accessibility
- Implement findings from research regarding CPD accreditation of our sports training offer
- Develop further eLearning opportunities, taking advantage of the Nucleus platform
- Develop a course focusing on Sport Case Management
- Retain a level of agility to enable us to identify and maximise opportunities that may arise throughout the year.

Goal – undertake audits to help organisations work towards best practice in safeguarding adults

Actions within this section include:

- Implement the findings from the work started in 24/25 to develop a structured approach to audit, linking our different audits offers through a pathway approach
- Seek opportunities to develop a framework assessment approach within a new sector

Goal – to be a leading authority on safeguarding adults in the UK

Actions in this section include:

- * Continuing to seek out opportunities within Universities and other organisations to support research.
- * Incorporation of “icebreaker” activity/ scenario planning within Board meetings.
- * Policy development schedule to be implemented and guidance on those specific to Ann Craft Trust and those that must be followed as university employees.

The Ann Craft Trust

Trustees' Report

- * Support trustee with engagement in external communications and promotion of trust.
- * Ensure trustees receive regular feedback reports including an annual summary of complaints and resolutions
- * Production of heatmap of activities to support reporting and initial thinking on EDI.
- * Create further opportunities for trustees and staff to collaborate on strategy development and refreshing the purpose as required to meet the needs of the external environment.

Governance actions –

Promote governance work through the annual report to evidence trustee commitment to improvement.

Small companies provision statement

This report has been prepared in accordance with the small companies regime under the Companies Act 2006.

The Ann Craft Trust

Trustees' Report

Statement of Responsibilities

The trustees (who are also the directors of The Ann Craft Trust for the purposes of company law) are responsible for preparing the trustees' report and the financial statements in accordance with applicable law and United Kingdom Accounting Standards (United Kingdom Generally Accepted Accounting Practice), including FRS 102 "The Financial Reporting Standard applicable in the UK and Republic of Ireland". The report and accounts have been prepared in accordance with the provisions in the Companies Act 2006 relating to small companies.

Company law requires the trustees to prepare financial statements for each financial year. Under company law the trustees must not approve the financial statements unless they are satisfied that they give a true and fair view of the state of affairs of the charitable company and of the incoming resources and application of resources, including its income and expenditure, of the charitable company for that period. In preparing these financial statements, the trustees are required to:

- select suitable accounting policies and apply them consistently;
- observe the methods and principles in the Charities SORP;
- make judgements and estimates that are reasonable and prudent;
- state whether applicable accounting standards, comprising FRS 102 have been followed, subject to any material departures disclosed and explained in the financial statements; and
- prepare the financial statements on the going concern basis unless it is inappropriate to presume that the charitable company will continue in business.

The trustees are responsible for keeping proper accounting records that can disclose with reasonable accuracy at any time the financial position of the charitable company and enable them to ensure that the financial statements comply with the Companies Act 2006. They are also responsible for safeguarding the assets of the charitable company and hence for taking reasonable steps for the prevention and detection of fraud and other irregularities.

The trustees are responsible for the maintenance and integrity of the corporate and financial information included on the charitable company's website. Legislation governing the preparation and dissemination of financial statements may differ from legislation in other jurisdictions.

Approved by the trustees of the charity on 23/02/2026 and signed on its behalf by:



Paul Johnson
Trustee

The Ann Craft Trust

Independent Examiner's Report to the trustees of The Ann Craft Trust ('the Company')

Independent examiner's report to the trustees of The Ann Craft Trust ('the Company')

I report to the charity trustees on my examination of the accounts of the company for the year ended 31 July 2025.

Responsibilities and basis of report

As the charity's trustees of the Company (and also its directors for the purposes of company law) you are responsible for the preparation of the accounts in accordance with the requirements of the Companies Act 2006 ('the 2006 Act').

Having satisfied myself that the accounts of the Company are not required to be audited under Part 16 of the 2006 Act and are eligible for independent examination, I report in respect of my examination of your charity's accounts as carried out under section 145 of the Charities Act 2011 ('the 2011 Act'). In carrying out my examination I have followed the Directions given by the Charity Commission under section 145(5)(b) of the 2011 Act.

Independent examiner's statement

Since the Company's gross income exceeded £250,000 your examiner must be a member of a body listed in section 145 of the 2011 Act. I confirm that I am qualified to undertake the examination because I am a member of the Chartered Institute of Public Finance and Accountancy (CIPFA), which is one of the listed bodies.

I have completed my examination. I confirm that no matters have come to my attention in connection with the examination giving me cause to believe that in any material respect:

1. accounting records were not kept in respect of the Company as required by section 386 of the 2006 Act; or
2. the accounts do not accord with those records; or
3. the accounts do not comply with the accounting requirements of section 396 of the 2006 Act other than any requirement that the accounts give a 'true and fair' view which is not a matter considered as part of an independent examination; or
4. the accounts have not been prepared in accordance with the methods and principles of the Statement of Recommended Practice for accounting and reporting by charities [applicable to charities preparing their accounts in accordance with the Financial Reporting Standard applicable in the UK and Republic of Ireland (FRS 102)].

I have no concerns and have come across no other matters in connection with the examination to which attention should be drawn in this report in order to enable a proper understanding of the accounts to be reached.

24/02/2026

Eva Stevens, BSc, CPFA employee of Community Accounting Plus
member of the Chartered Institute of Public Finance and Accountancy (CIPFA)

Units 1 & 2 North West
41 Talbot Street
Nottingham
NG1 5GL

Date: 

The Ann Craft Trust

Statement of Financial Activities for the Year Ended 31 July 2025 (Including Income and Expenditure Account and Statement of Total Recognised Gains and Losses)

	Note	Unrestricted funds £	Restricted funds £	Total 2025 £	Total 2024 £
Income and Endowments from:					
Donations and legacies	2	404	-	404	1,066
Charitable activities	3	372,505	482,286	854,791	864,168
Investment income	5	7,022	-	7,022	19,669
Total income		<u>379,931</u>	<u>482,286</u>	<u>862,217</u>	<u>884,903</u>
Expenditure on:					
Charitable activities	6	<u>(470,503)</u>	<u>(433,649)</u>	<u>(904,152)</u>	<u>(886,234)</u>
Total expenditure		<u>(470,503)</u>	<u>(433,649)</u>	<u>(904,152)</u>	<u>(886,234)</u>
Net (expenditure)/income		<u>(90,572)</u>	<u>48,637</u>	<u>(41,935)</u>	<u>(1,331)</u>
Net movement in funds		(90,572)	48,637	(41,935)	(1,331)
Reconciliation of funds					
Total funds brought forward		<u>382,892</u>	<u>48,351</u>	<u>431,243</u>	<u>432,574</u>
Total funds carried forward	11	<u><u>292,320</u></u>	<u><u>96,988</u></u>	<u><u>389,308</u></u>	<u><u>431,243</u></u>

All of the charity's activities derive from continuing operations during the above two periods.

The funds breakdown for the period is shown in note 11.

The notes on pages 21 to 29 form an integral part of these financial statements.

The Ann Craft Trust

Statement of Financial Activities for the Year Ended 31 July 2025 (Including Income and Expenditure Account and Statement of Total Recognised Gains and Losses)

These are the figures for the previous accounting period and are included for comparative purposes

	Note	Unrestricted funds £	Restricted funds £	Total 2024 £
Income and Endowments from:				
Donations and legacies	2	1,066	-	1,066
Charitable activities	3	418,330	445,838	864,168
Investment income	5	19,669	-	19,669
Total income		<u>439,065</u>	<u>445,838</u>	<u>884,903</u>
Expenditure on:				
Charitable activities	6	<u>(399,716)</u>	<u>(486,518)</u>	<u>(886,234)</u>
Total expenditure		<u>(399,716)</u>	<u>(486,518)</u>	<u>(886,234)</u>
Net income/(expenditure)		<u>39,349</u>	<u>(40,680)</u>	<u>(1,331)</u>
Net movement in funds		39,349	(40,680)	(1,331)
Reconciliation of funds				
Total funds brought forward		<u>343,543</u>	<u>89,031</u>	<u>432,574</u>
Total funds carried forward	11	<u><u>382,892</u></u>	<u><u>48,351</u></u>	<u><u>431,243</u></u>

The notes on pages 21 to 29 form an integral part of these financial statements.

The Ann Craft Trust

(Registration number: 4080805) Balance Sheet as at 31 July 2025

	Note	2025 £	2024 £
Current assets			
Debtors	8	43,851	47,111
Cash at bank and in hand	9	<u>483,538</u>	<u>545,344</u>
		527,389	592,455
Creditors: Amounts falling due within one year	10	<u>(138,081)</u>	<u>(161,212)</u>
Net assets		<u>389,308</u>	<u>431,243</u>
Funds of the charity:			
Restricted income funds			
Restricted funds	11	96,988	48,351
Unrestricted income funds			
Unrestricted funds		<u>292,320</u>	<u>382,892</u>
Total funds	11	<u>389,308</u>	<u>431,243</u>

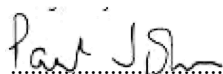
For the financial year ending 31 July 2025 the charity was entitled to exemption from audit under section 477 of the Companies Act 2006 relating to small companies.

Directors' responsibilities:

- The members have not required the charity to obtain an audit of its accounts for the year in question in accordance with section 476; and
- The directors acknowledge their responsibilities for complying with the requirements of the Act with respect to accounting records and the preparation of accounts.

These financial statements have been prepared in accordance with the special provisions relating to companies subject to the small companies regime within Part 15 of the Companies Act 2006.

The financial statements on pages 17 to 29 were approved by the trustees, and authorised for issue on ~~23/02/2026~~ and signed on their behalf by:


.....

Paul Johnson
Trustee

The notes on pages 21 to 29 form an integral part of these financial statements.

The Ann Craft Trust

Statement of Cash Flows for the Year Ended 31 July 2025

	Note	2025 £	2024 £
Cash flows from operating activities			
Net cash expenditure		(41,935)	(1,331)
Adjustments to cash flows from non-cash items			
Investment income	5	<u>(7,022)</u>	<u>(19,669)</u>
		(48,957)	(21,000)
Working capital adjustments			
Decrease in debtors	8	3,260	21,586
(Decrease)/increase in creditors	10	(23,131)	28,564
Decrease in deferred income	10	<u>-</u>	<u>(19,041)</u>
Net cash flows from operating activities		(68,828)	10,109
Cash flows from investing activities			
Interest receivable and similar income	5	<u>7,022</u>	<u>19,669</u>
Net (decrease)/increase in cash and cash equivalents		(61,806)	29,778
Cash and cash equivalents at 1 August		<u>545,344</u>	<u>515,566</u>
Cash and cash equivalents at 31 July		<u><u>483,538</u></u>	<u><u>545,344</u></u>
Reconciliation of net cash flow to movement in net funds			
(Decrease)/increase in cash		(61,806)	29,778
Net funds at 1 August 2024		<u>545,344</u>	<u>515,566</u>
Net funds at 31 July 2025		<u><u>483,538</u></u>	<u><u>545,344</u></u>

All of the cash flows are derived from continuing operations during the above two periods.

The notes on pages 21 to 29 form an integral part of these financial statements.

The Ann Craft Trust

Notes to the Financial Statements for the Year Ended 31 July 2025

1 Accounting policies

Summary of significant accounting policies and key accounting estimates

The principal accounting policies applied in the preparation of these financial statements are set out below. These policies have been consistently applied to all the years presented, unless otherwise stated.

Statement of compliance

The financial statements have been prepared in accordance with Accounting and Reporting by Charities: Statement of Recommended Practice (applicable to charities preparing their accounts in accordance with the Financial Reporting Standard applicable in the UK and Republic of Ireland (FRS 102)) (issued in October 2019) - (Charities SORP (FRS 102)), the Financial Reporting Standard applicable in the UK and Republic of Ireland (FRS 102) and the Companies Act 2006.

Basis of preparation

The Ann Craft Trust meets the definition of a public benefit entity under FRS 102. Assets and liabilities are initially recognised at historical cost or transaction value unless otherwise stated in the relevant accounting policy notes.

Going concern

The financial statements have been prepared on a going concern basis.

The trustees assess whether the use of going concern is appropriate i.e. whether there are any material uncertainties related to events or conditions that may cast significant doubt on the ability of the charity to continue as a going concern. The trustees make this assessment in respect of a period of one year from the date of approval of the financial statements.

Exemption from preparing a cash flow statement

Under the exemption available to smaller charities the Board of Trustees has chosen not to include a Statement of Cash Flows within the financial statements.

Income and endowments

Voluntary income including donations, gifts, legacies and grants that provide core funding or are of a general nature is recognised when the charity has entitlement to the income, it is probable that the income will be received and the amount can be measured with sufficient reliability.

Donations and legacies

Donations are recognised when the charity has been notified in writing of both the amount and settlement date. In the event that a donation is subject to conditions that require a level of performance by the charity before the charity is entitled to the funds, the income is deferred and not recognised until either those conditions are fully met, or the fulfilment of those conditions is wholly within the control of the charity and it is probable that these conditions will be fulfilled in the reporting period.

Investment income

Dividends are recognised once the dividend has been declared and notification has been received of the dividend due.

The Ann Craft Trust

Notes to the Financial Statements for the Year Ended 31 July 2025

Expenditure

All expenditure is recognised once there is a legal or constructive obligation to that expenditure, it is probable settlement is required and the amount can be measured reliably. All costs are allocated to the applicable expenditure heading that aggregate similar costs to that category. Where costs cannot be directly attributed to particular headings they have been allocated on a basis consistent with the use of resources, with central staff costs allocated on the basis of time spent, and depreciation charges allocated on the portion of the asset's use. Other support costs are allocated based on the spread of staff costs.

Charitable activities

Charitable expenditure comprises those costs incurred by the charity in the delivery of its activities and services for its beneficiaries. It includes both costs that can be allocated directly to such activities and those costs of an indirect nature necessary to support them.

Taxation

The charity is considered to pass the tests set out in Paragraph 1 Schedule 6 of the Finance Act 2010 and therefore it meets the definition of a charitable company for UK corporation tax purposes. Accordingly, the charity is potentially exempt from taxation in respect of income or capital gains received within categories covered by Chapter 3 Part 11 of the Corporation Tax Act 2010 or Section 256 of the Taxation of Chargeable Gains Act 1992, to the extent that such income or gains are applied exclusively to charitable purposes.

Trade debtors

Trade debtors are amounts due from customers for merchandise sold or services performed in the ordinary course of business.

Trade debtors are recognised initially at the transaction price. They are subsequently measured at amortised cost using the effective interest method, less provision for impairment. A provision for the impairment of trade debtors is established when there is objective evidence that the charity will not be able to collect all amounts due according to the original terms of the receivables.

Cash and cash equivalents

Cash and cash equivalents comprise cash on hand and call deposits, and other short-term highly liquid investments that are readily convertible to a known amount of cash and are subject to an insignificant risk of change in value.

Trade creditors

Trade creditors are obligations to pay for goods or services that have been acquired in the ordinary course of business from suppliers. Accounts payable are classified as current liabilities if the charity does not have an unconditional right, at the end of the reporting period, to defer settlement of the creditor for at least twelve months after the reporting date. If there is an unconditional right to defer settlement for at least twelve months after the reporting date, they are presented as non-current liabilities.

Trade creditors are recognised initially at the transaction price and subsequently measured at amortised cost using the effective interest method.

Fund structure

Unrestricted income funds are general funds that are available for use at the trustees' discretion in furtherance of the objectives of the charity.

The Ann Craft Trust

Notes to the Financial Statements for the Year Ended 31 July 2025

Restricted income funds are those grants for use in a particular area or for specific purposes, the use of which is restricted to that area or purpose.

Pensions and other post retirement obligations

The charity operates a defined contribution pension scheme which is a pension plan under which fixed contributions are paid into a pension fund and the charity has no legal or constructive obligation to pay further contributions even if the fund does not hold sufficient assets to pay all employees the benefits relating to employee service in the current and prior periods.

Contributions to defined contribution plans are recognised in the Statement of Financial Activities when they are due. If contribution payments exceed the contribution due for service, the excess is recognised as a prepayment.

2 Income from donations and legacies

	Unrestricted funds General £	Total 2025 £	Total 2024 £
Donations and legacies;			
Donations from individuals	404	404	1,066
	<u>404</u>	<u>404</u>	<u>1,066</u>

The Ann Craft Trust

Notes to the Financial Statements for the Year Ended 31 July 2025

3 Income from charitable activities

	Unrestricted funds General £	Restricted funds £	Total 2025 £	Total 2024 £
Grants	-	482,286	482,286	445,838
Sales & Fees	354,104	-	354,104	392,255
Conference	10,141	-	10,141	14,491
Royalties	8,244	-	8,244	11,573
Sundry	16	-	16	11
	<u>372,505</u>	<u>482,286</u>	<u>854,791</u>	<u>864,168</u>

4 Grants & donations

	Unrestricted funds £	Restricted funds £	Total £
Sport England	-	336,836	336,836
Sport Wales	-	62,000	62,000
UK Sport	-	83,450	83,450
Sundry grants & donations	404	-	404
	<u>404</u>	<u>482,286</u>	<u>482,690</u>

5 Investment income

	Unrestricted funds General £	Total 2025 £	Total 2024 £
Interest receivable and similar income;			
Interest receivable on bank deposits	7,022	7,022	19,669
	<u>7,022</u>	<u>7,022</u>	<u>19,669</u>

The Ann Craft Trust

Notes to the Financial Statements for the Year Ended 31 July 2025

6 Expenditure on charitable activities

	Unrestricted funds General £	Restricted funds £	Total 2025 £	Total 2024 £
Associate trainer fees	83,441	4,440	87,881	85,502
Conference	10,752	-	10,752	10,468
Consultants	1,704	6,760	8,464	37,412
Consultants expenses	454	399	853	1,577
Marketing & communications	9,478	21,275	30,753	23,738
Staff expenses	4,543	7,583	12,126	13,610
Trainers expenses	8,439	-	8,439	6,036
Website hosting & system	4,945	15,583	20,528	28,731
Finance costs	2,716	516	3,232	5,429
Hospitality & catering	99	5	104	266
I.T Equipment	2,307	-	2,307	1,477
Management committee	3,651	-	3,651	166
Office expenses	3,345	785	4,130	5,269
Staff development	1,013	307	1,320	2,580
Staff cost UoN	325,720	366,395	692,115	660,806
Grants repaid	-	-	-	3,167
Other staff cost	7,896	9,601	17,497	-
	<u>470,503</u>	<u>433,649</u>	<u>904,152</u>	<u>886,234</u>

The Ann Craft Trust

Notes to the Financial Statements for the Year Ended 31 July 2025

7 Staff costs

The aggregate payroll costs were as follows:

	2025 £	2024 £
Staff costs during the year were:		
Wages and salaries	563,206	547,934
Social security costs	61,146	46,320
Pension costs	67,763	66,552
	<u>692,115</u>	<u>660,806</u>

The monthly average number of persons (including senior management team) employed by the charity during the year was as follows:

	2025 No	2024 No
Average number of employees	<u>15</u>	<u>16</u>

(2024 - 13) of the above employees participated in the Defined Contribution Pension Schemes.

No employee received emoluments of more than £60,000 during the year.

8 Debtors

	2025 £	2024 £
Trade debtors	24,221	46,601
Prepayments	19,630	510
	<u>43,851</u>	<u>47,111</u>

9 Cash and cash equivalents

	2025 £	2024 £
Cash at bank	<u>483,538</u>	<u>545,344</u>

The Ann Craft Trust

Notes to the Financial Statements for the Year Ended 31 July 2025

10 Creditors: amounts falling due within one year

	2025 £	2024 £
Trade creditors	67,028	79,844
Other taxation and social security	6,122	16,857
Other creditors	2,244	2,160
Accruals	62,687	62,351
	138,081	161,212

11 Funds

	Balance at 1 August 2024 £	Incoming resources £	Resources expended £	Balance at 31 July 2025 £
Unrestricted funds				
<i>General</i>				
General	382,892	379,931	(470,503)	292,320
Restricted funds				
Sport England	44,501	336,836	(312,575)	68,762
Sport Wales	14,782	62,000	(60,204)	16,578
UK Sport	(10,932)	83,450	(60,870)	11,648
Total restricted funds	48,351	482,286	(433,649)	96,988
Total funds	431,243	862,217	(904,152)	389,308
	Balance at 1 August 2023 £	Incoming resources £	Resources expended £	Balance at 31 July 2024 £
Unrestricted funds				
<i>General</i>				
General	343,543	439,065	(399,716)	382,892
Restricted				
Sport England	72,059	323,738	(351,296)	44,501
Sport Wales	16,099	62,000	(63,317)	14,782
UK Sport	873	60,100	(71,905)	(10,932)
Total restricted funds	89,031	445,838	(486,518)	48,351
Total funds	432,574	884,903	(886,234)	431,243

The Ann Craft Trust

Notes to the Financial Statements for the Year Ended 31 July 2025

The specific purposes for which the funds are to be applied are as follows:

Sport England: To support the Sport England funded organisations and the continued development of the Safeguarding in Sport framework

Sport Wales: To deliver a focussed, high quality adult safeguarding advisory and support service to Sport Wales partners and the wider sector

UK Sport: To provide training, support and advice to UK Sport funded organisations

12 Analysis of net assets between funds

	Unrestricted		2025
	General	Restricted	Total funds
	£	£	£
Current assets	430,401	96,988	527,389
Current liabilities	<u>(138,081)</u>	<u>-</u>	<u>(138,081)</u>
Total net assets	<u><u>292,320</u></u>	<u><u>96,988</u></u>	<u><u>389,308</u></u>
	Unrestricted		2024
	General	Restricted	Total funds
	£	£	£
Current assets	544,104	48,351	592,455
Current liabilities	<u>(161,212)</u>	<u>-</u>	<u>(161,212)</u>
Total net assets	<u><u>382,892</u></u>	<u><u>48,351</u></u>	<u><u>431,243</u></u>

13 Fees payable to independent examiner

During the period, the fees payable (excluding VAT) to the charity's independent examiner Community Accounting Plus are analysed as follows:

	2025	2024
	£	£
Independent examination	1,870	1,800
Other financial services	825	1,260
	<u><u>2,695</u></u>	<u><u>3,060</u></u>

The Ann Craft Trust

Notes to the Financial Statements for the Year Ended 31 July 2025

14 Taxation

The charity is a registered charity and is therefore exempt from corporation taxation.

15 Trustees remuneration and expenses

No trustees, nor any persons connected with them, have received any remuneration from the charity during the year.

No trustees have received any reimbursed expenses or any other benefits from the charity during the year.

16 Related party transactions

There were no related party transactions in the year.