

Ann Craft Trust

Annual Report

2016/2017



MEMBERS OF ACT COMMITTEES AND GROUPS

TRUSTEES

Claire Bearder
Gwyn Fraser (Chair)
Dave Marsland
Tania May (Vice Chair)
Sandy Pearce

MANAGEMENT COMMITTEE

Gwyn Fraser (Chair)
Rachel Fyson
Janet Garnons-Williams
Deborah Kitson
David Marsland
Tania May (Vice Chair)
Rob Morgan
Sandy Pearce
Bridget Penhale

RESEARCH, DEVELOPMENT AND CONSULTANCY

Rachael Clawson
Rachel Fyson
Sarah Goff
Deborah Kitson

TRAINING ASSOCIATES

Ian Ford
Claire Greenwood
Sue Gregory
Bill Horrocks
Julia McNaney
Stuart Sale
Nick Slinn
Jacquie Spencer
Tina Thordal
Sue Thurman

PATRONS

Sir Roger Singleton
Kate Spicer

Members of Staff

Lisa Curtis	Safeguarding Adults at Risk Manager
Nicola Dean	Safeguarding Adults in Sport Manager
Sarah Goff	Development Manager – Safeguarding Disabled Children
Deborah Kitson	Chief Executive Officer
Abra Millar	Marketing Officer
Nat Rock	Finance and Training Administrator

**Ann Craft Trust
Centre for Social Work
University Park
University of Nottingham
Nottingham
NG7 2RD**

**Telephone: 0115 9515400
Fax: 0115 9515232
Email: Ann-Craft-Trust@nottingham.ac.uk
Website: www.anncrafttrust.org
Registered Charity No 1086592
Company Limited by Guarantee No 4080805**

Chair of Trustees' Report

This has been an extremely busy year for the Ann Craft Trust, which is growing apace, both in terms of staffing and of what we are involved in. ACT's expertise is now recognised in many different areas and we can look back with pride as we celebrate the past twenty-five years and consider what we have achieved over this time.

Over the past year we have appointed two new members of staff, Lisa Curtis, who is our Adults at Risk Manager and Abra Millar, Marketing Officer. Nicola Dean, Safeguarding Adults in Sports Manager, has had her funding extended so will be with us, we hope, for some time to come and we are even hoping to appoint another person to work in safeguarding in sport. We are very sad to report that Sandy Pearce, our longest-standing Trustee will be leaving us this year. We will miss her incisive contributions to our discussions and her vast knowledge.

My thanks, as ever, go to all members of the staff team for their unstinting work throughout the year. The EU Project, comparing residential services for disabled children in four European countries, which Sarah Goff, our Safeguarding Children's Manager, was leading has come to an end, but Sarah is now leading on a new research project, in partnership with Coventry University, on the domestic abuse of young people with disabilities. Lisa has made her mark with her valued contributions to adult safeguarding. Nicola continues to develop her work with sports - organising seminars, providing training and case advice and making links with sporting organisations. Abra has been developing a wonderful new website for us, which will be up and running by the end of the year. Natascha Rock has been doing a fantastic job with organising training and running our finances. And Deborah continues to draw it all together with her usual blend of hard work, leadership, knowledge, and expertise. This is apart from all the consultancy work she does, her involvement in particular projects and her involvement with the Safeguarding Adults Network.

There are so many exciting initiatives at the moment. These include our work on the forced marriage of people with learning disabilities and a two-year study, My Marriage, My Choice, which Deborah and Lisa are involved in together with the University of Nottingham.

My thanks also go to the Management Committee and Board of Trustees for all their work, their commitment and their willingness to contribute. They are a great group of people and I never cease to be amazed by the depth and breadth of knowledge within the group. Thanks, also, to the Associate Trainers whose skills and hard work help to make ACT such a well-respected training organisation.

We continue to maintain our links with the School of Sociology and Social Policy and I wish to thank, Bruce Stafford, Head of School and the other staff for their ongoing support which we appreciate very much. We are now looking forward to working with the new Head of School, Ian Shaw.

And, last but not least, thank you to everyone who supports ACT and the work that we do. Let's see what more we can achieve together over the next twenty-five years!

Gwyn Fraser
Chair of Trustees

Chief Executive Officer's Report

This year has continued to represent a challenge to all services in relation to safeguarding and there have been a number of new reports and resources that have exposed the current situation in health, social care and the wider community. While awareness is growing about the rights of the people we support to lives free of abuse and to have their human rights respected evidence reveals that for many restrictions and lack of choices and involvement in decisions about their lives continue.

In March this year we saw the publication of the long awaited Law Commission's report Mental Capacity and Deprivation of Liberty. The consultation was a review of the Mental Capacity Act and the Deprivation of Liberty Safeguards (DoLS).

The report sets out recommendations together with a draft Bill. The final report and draft Bill recommends the DoLS be repealed with pressing urgency and sets out a replacement scheme for the DoLS – called the Liberty Protection Safeguards. In addition, the draft Bill makes wider reforms to the Mental Capacity Act which ensure greater safeguards for persons before they are deprived of their liberty. We hope for further news about this in 2018.

Internet safety and online bullying has been a growing concern this year and although this growth in technology is welcomed by many and very much a part of our lives today, concerns have arisen, particularly surrounding child protection and social media.

Cyberbullying is something that has increased with this advancement. While the media tends to focus more on online sexual victimisation, young adults and children are at more risk of cyberbullying.

And in July we saw the publication of a report that looked at how people with learning disabilities are moved to hospitals or units around the country, away from their homes.

This has prompted discussion about the Assessment and Treatment Units for people with learning disabilities. A particular concern has been the increase in private hospitals despite a government commitment to address this issue and to integrate more people into the community.

A similar situation in children's mental health care led to 170 under 18s being in locked ATUs and secure units at any one time. This, combined with chronic lack of resources for Children and Adolescent Mental Health Services, means the rights of many young people and young adults are not being upheld to have the chance to live a community based and stimulating fulfilling life. These are all challenges that we need to address in the coming year.

The Ann Craft Trust, celebrating its 25th year, has been successful in securing funding to continue a number of areas of its work. Sport England have awarded

ACT further funding to continue to develop our work across the sport and activity sector ensuring that adults at risk are safeguarded in sport and as a result are increasingly able to participate in sport and recreation. Sport England's 'Towards an Active Nation' emphasises their aim to increase participation and we hope that our work will assist in this endeavour.

We have also been awarded funding from Lloyds Foundation for a two year project looking at domestic abuse of young people with disabilities. Sarah Goff, in partnership with Coventry University, is leading this research and we will feature news of its progress in our quarterly bulletins.

ACT has also been working closely again with the University of Nottingham on the forced marriage of people with learning disabilities. My Marriage My Choice is a two year study, funded by the National Institute for Health Research - School of Social Care Research (NIHR-SSCR). My Marriage My Choice project will raise awareness of forced marriage in order that all of those who are involved in the education, care and support of individuals who cannot effectively consent to any such undertaking, might be empowered to recognise forced marriage as such and respond appropriately.

I am also pleased to report that the Safeguarding Adults Network has continued to meet quarterly and to explore, discuss and challenge a range of issues that services commonly face while striving for best practice in safeguarding. We are currently planning a Safeguarding Week next November that will each day feature and focus on a prominent safeguarding issue including disability hate crime and internet safety. There will be further news and updates in our quarterly bulletins and we hope that as many people as possible will join in the week of activities and awareness raising.

In summary then we have had a busy year and this could never be achieved without the great team at ACT. All members of the team continually impress me with their commitment and energy and ACT would certainly not have achieved its success this year without the contribution of all.

We are as ever grateful to the University for their support and friendship and continue to enjoy participating in teaching with the School and supporting students who have an interest in our area of work.

And finally on behalf of the ACT team I would like to thank the Trustees and the management committee for their support to the team and the work of ACT.

Deborah Kitson

ACCOUNTS FOR YEAR ENDING 31st JULY 2017

Independent examiner's report on the accounts

Respective responsibilities of trustees and examiner

The trustees (who are also the directors of the company for the purposes of company law) are responsible for the preparation of the accounts. The charity's trustees consider that an audit is not required for this year under section 144 of the Charities Act 2011 (the Charities Act) and that an independent examination is needed.

It is my responsibility to:

- examine the accounts under section 145 of the Charities Act,
- to follow the procedures laid down in the general Directions given by the Charity Commission (under section 145(5)(b) of the Charities Act, and
- to state whether particular matters have come to my attention.

Basis of independent examiner's statement

My examination was carried out in accordance with general Directions given by the Charity Commission. An examination includes a review of the accounting records kept by the charity and a comparison of the accounts presented with those records. It also includes consideration of any unusual items or disclosures in the accounts, and seeking explanations from the trustees concerning any such matters. The procedures undertaken do not provide all the evidence that would be required in an audit, and consequently no opinion is given as to whether the accounts present a 'true and fair' view and the report is limited to those matters set out in the statement below.

Section A: Independent examiner's report

Independent examiner's statement In connection with my examination, no matter has come to my attention to indicate that:

- accounting records have not been kept in accordance with section 386 of the Companies Act 2006;
- the accounts do not accord with such records:
- where accounts are prepared on an accruals basis, whether they fail to comply with relevant accounting requirements under section 396 of the Companies Act 2006, or are not consistent with the Charities SORP (FRS102)
- any matter which the examiner believes should be drawn to the attention of the reader to gain a proper understanding of the accounts.

Signed



Date

9/11/2017

Name

Robert Morgan ACMA

Address

14 Scrivener Close

Bushby

LE7 9NE

THE ANN CRAFT TRUST

Income and Expenditure for the year ending 31 July 2017

Income and Expenditure Account	Yr-ended 31/07/2017	Yr-ended 31/07/2017
Income	£	£
Subscriptions	0	
Publications	111	13
Training by Associates (incl consultancy)	126,354	78,151
Donations & Non-recurring income	1,484	2,031
Research/Project Income - Lloyds	7,405	126,612
Forced Marriage research	2,600	
European Project	15,000	
Sport England	59,591	
Sport England	95,142	
Total Income	307,687	206,708
Expenditure	£	£
Staff Costs	193,249	170,726
Trainers' Fees	25,197	27,845
Trainers' Travel & Subsistence	2,438	4,734
Trust Operating Costs	4,984	3,768
European project expenses	1,529	
Total Expenditure	227,397	207,073
Net Income / (Expenditure) for the Year	80,290	(365)

THE ANN CRAFT TRUST

Balance Sheet as at 31st July 2017

	Yr-ended 31/07/2017	Yr-ended 31/07/2016
	£	£
Cash	80,290	129,140
Net Assets	80,290	129,140
Reserves	80,290	129,140

Notes to the Accounts

1. The movement on the Reserves is as follows:

	Yr-ended 31/07/2017	Yr-ended 31/07/2016
	£	£
Reserves as at 31st July	129,140	129,505
Surplus/ (Deficit) for the Year	80,290	(365)
Reserves as at 31st July	209,430	129,140

Safeguarding Adults in Sport Seminar



9th May 2017, University of Nottingham

Safeguarding Adults in Sport and Activity Seminar 2017: Organisational Responsibilities from Board to Club

In May 2017, we hosted our first 'Safeguarding Adults in Sport and Activity Seminar' which was well attended by Board Members and Safeguarding Leads from National Governing Bodies, County Sports Partnerships and a range of sports and activity organisations across the UK & Ireland.

My Marriage My Choice



My Marriage My Choice is a new project led by Rachael Clawson at the University of Nottingham which aims to empower those who are involved in education, care and support to recognise forced marriage and respond to individuals who cannot consent to marriage

European Project



ACTing against abuse



Federation Global Initiative on Psychiatry



LIGA LIDSKÝCH PRÁV

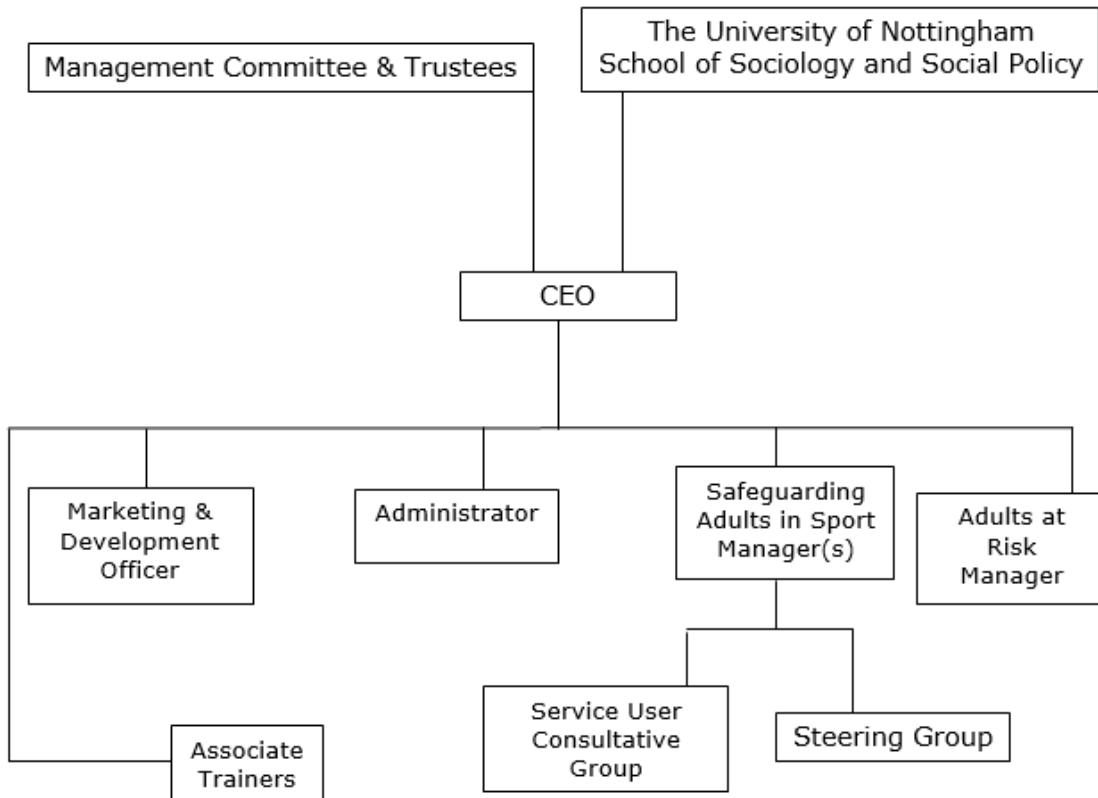


mdac
mental disability
advocacy centre

In 2017, the report on our project with the Mental Disability Advocacy Centre in Hungary and colleagues from Bulgaria and Czech Republic on a project aimed at helping develop ways to monitor the care of children with learning disabilities and mental health problems in institutional care in Europe was released.

Staffing Structure

The Ann Craft Trust is a registered charity (1086592) and a company limited by guarantee (4080805). Its Articles and Memorandum of Association and details of its Board of Trustees are available on ACT and Companies House websites.



Key

----- Existing staff

Planned Recruitment

THE ANN CRAFT TRUST

National Association for the Protection from Abuse of Adults and Children with Learning Disabilities

ACT is an association concerned with facilitating the protection of all adults and children with learning disabilities who are vulnerable to abuse.

AIMS:

- 1. ACT maintains an information exchange network for statutory and voluntary agencies, for professionals and individuals through a national office and**
 - the production and circulation of a quarterly bulletin**
 - the compilation of a network of members and their specific interests**
 - the editing and updating of an annotated bibliography and information sheets on specific topics.**

- 2. ACT works towards raising the general level of awareness of issues relating to the abuse of children and adults with learning disabilities by**
 - making links with other relevant organisations (both specialist and mainstream)**
 - producing a wide range of publications**
 - organisation of, and contribution to conferences, seminars and training events**
 - contributing to public debate as appropriate when matters of concern arise locally or nationally.**

ACT works to an equal opportunities policy, facilitating protection to all people with disabilities, with attention and respect to race, culture, religion, gender, age and sexual orientation.

The Ann Craft Trust
Centre for Social Work
University of Nottingham
University Park
Nottingham
NG7 2RD
Tel: 0115 951 5400
Fax: 0115 951 5232
Email: Ann-Craft-Trust@nottingham.ac.uk
Website: www.anncrafttrust.org



ACTing against abuse